

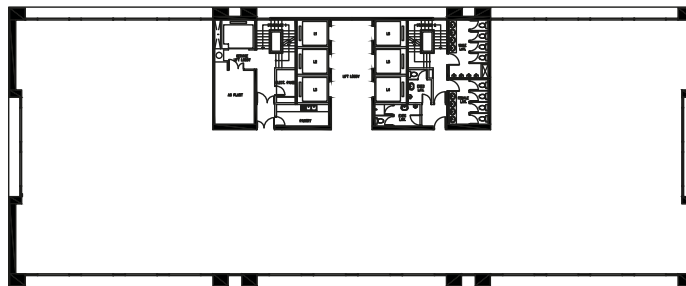
Formerly known as Metropolitan I, WTC 5 is a landmark on Jalan Sudirman. Designed by Palmer & Turner, WTC 5 underlines Jakarta Land's commitment to continual upgrading of essential services and high-quality maintenance, including recent multi-million dollar upgrades to its lifts, replacement of air-conditioning systems, power supply backbone, and generators.

TECHNICAL SPECIFICATIONS

Total lettable area	: 18,000 sqm (semi gross)	Security systems	: • X-ray and metal detector screening at pedestrian entrances • 24 hour CCTV monitoring at all main entrances and public areas
Typical floor area	: 1,000 sqm (semi gross)	Fire protection	: Full sprinkler provision with smoke and heat detectors, hose reel, and centralised warning system
Ceiling	: Suspended ceiling with acoustic ceiling tiles, height 2.6 m	Backup power	: 100% generator backup power
Floor loading	: 250 kg per sqm	Lifts	: • 6 passenger lifts • 1 service lift (1,800 kg)
Car parking	: 15 lots basement, 2,000 lots total complex	Floors	: 17 office floors Ground and lower ground floor retail
Floor efficiency	: Regular column free floors	Telecommunications	: Flexible, state of the art telecommunication provisions
Toilets	: On each office floor: <ul style="list-style-type: none"> • 1 Male (4 basins, 4 urinals, 3 WC's, and 1 ablution) • 1 Female (4 basins, 3 WC's, and 1 ablution) • 1 Executive toilet with shower 		
Pantry	: 1 per floor		
Air conditioning	: • Centrifugal chillers, low velocity distribution • Independent AHU per floor		

FLOOR PLAN

TYPICAL OFFICE FLOOR



The information contained in this fact sheet is for guidance purposes only and no warranties are made or intended.