

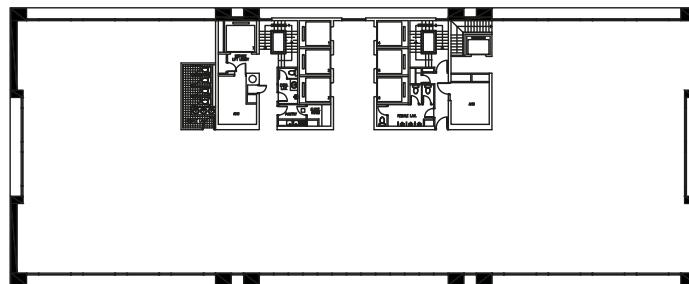
Formerly known as Metropolitan II, WTC 6 is based on the same principles as WTC 5 and was also designed by Palmer & Turner. WTC 6's column-free, side-core design, together with a package of upgrades to lifts, air conditioning systems, power supply backbone, and backup generator, will ensure first-class services. Not just now, but for many years into the future.

TECHNICAL SPECIFICATIONS

Total lettable area	: 16,000 sqm (semi gross)	Security systems	: • X-ray and metal detector screening at pedestrian entrances
Typical floor area	: 1,000 sqm (semi gross)		• 24 hour CCTV monitoring at all main entrances and public areas
Ceiling	: Suspended ceiling with acoustic ceiling tiles, height 2.6 m	Fire protection	: Full sprinkler provision with smoke and heat detectors, hose reel, and centralised warning system
Floor loading	: 250 kg per sqm	Backup power	: 100% generator backup power
Car parking space	: 36 lots basement, 2,000 lots total complex	Lifts	: • 6 passenger lifts
Floor efficiency	: Regular, column free floors		• 1 service lift (1,800 kg)
Toilets	: On each office floor: <ul style="list-style-type: none"> • 1 Male (4 basins, 4 urinals, 3 WC's, and 1 ablution) • 1 Female (3 basins, 2 WC's, and 1 ablution) • 1 Executive toilet 	Floors	: 17 office floors
Pantry	: 1 per floor		Ground and lower ground floor retail
Air conditioning	: • Centrifugal chillers, low velocity distribution	Telecommunications	: Flexible, state of the art telecommunication provisions
	• Independent AHU per floor		

FLOOR PLAN

TYPICAL OFFICE FLOOR



The information contained in this fact sheet is for guidance purposes only and no warranties are made or intended.